

HBF TEXTILES

Fabric Cleaning & Disinfection
Against COVID-19



Cleaning vs. Disinfecting

Cleaning refers to the removal of germs, dirt, and impurities from surfaces. It does not kill germs, but by removing them, it lowers their numbers and the risk of spreading infection. Routine cleaning with soap and water will decrease how much of the virus is on surfaces, which reduces the risk of exposure.

Specific routine cleaning methods will vary fabric to fabric and can be found on the product pages of www.hbftextiles.com. As a standard, HBF Textiles uses the following cleaning codes:

- W Clean with water based shampoo or foam upholstery cleaner
- S Clean with water free dry cleaning solvent
- WS Clean with upholstery shampoo or mild dry cleaning solvent

Disinfecting refers to using chemicals, for example, [EPA-registered disinfectants](#), to kill germs on surfaces. This process does not necessarily clean dirty surfaces or remove germs, but by killing germs on a surface after cleaning, it can further lower the risk of spreading infection. (Please note, neither cleaning nor disinfecting will eliminate the risk of exposure to COVID-19.)

When using any disinfection agent, leave the solution on for at least 30 seconds, but no longer than 2 minutes. Do not saturate the surface of the fabric. Thoroughly remove the solution from the surface with a clean cloth and warm water. Discoloration of the fabric may occur if left on the surface longer than the suggested time or not removed after sanitizing.

Approved disinfection agents will vary fabric to fabric. Pages 2 and 3 of this document will provide information on fabrics approved for cleaning with bleach, isopropyl alcohol, and/or other EPA approved products.

Remember, clean first then disinfect!

HBF TEXTILES

Fabric Cleaning & Disinfection Against COVID-19 cont.

Bleach Cleanable Fabrics

The CDC recommends diluted bleach solutions as a disinfection agent to help reduce the spread of COVID-19. [HBF Textiles offers a broad range of fabrics that can be cleaned and disinfected with diluted bleach solutions.](#) Below is a list of our current bleach cleanable offering and the recommended bleach to water ratio.

Beetle*	1:10	\$46.00/yard	Ms. Quilty	1:10	\$106.00/yard
Caddy Corner	1:10	\$28.00/yard	Outdoor Check	1:5	\$54.00/yard
Color Code	1:10	\$53.00/yard	Paintbox	1:10	\$63.00/yard
Curtain Wall*	1:5	\$46.00/yard	Picnic Plaid	1:10	\$26.00/yard
Cutout	1:10	\$63.00/yard	Quilted Comfort*	1:10	\$70.00/yard
Deco Epingle*	1:10	\$70.00/yard	Roy's Cords*	1:5	\$52.00/yard
Digital Bloom	1:10	\$63.00/yard	Scribble XL*	1:10	\$70.00/yard
Dot Structure	1:10	\$63.00/yard	Sir Stripe-a-lot	1:10	\$61.00/yard
Enriched Boucle	1:10	\$66.00/yard	Sister Solid	1:10	\$72.00/yard
Folded Lines*	1:10	\$50.00/yard	Smart*	1:10	\$79.00/yard
Foundation	1:10	\$74.00/yard	Soft Angles	1:10	\$64.00/yard
Linkage	1:10	\$63.00/yard	Sweater Weather	1:5	\$64.00/yard
Madam Dottie*	1:10	\$47.00/yard	Velvet Mix*	1:10	\$75.00/yard
Merci Boucle*	1:10	\$66.00/yard	Woodblock	1:10	\$68.00/yard
Mr. Dimple	1:10	\$106.00/yard			

*Healthier Hospitals (HH) V2 Compliant:

(Material does not contain antimicrobials, per fluorinated compounds, flame retardants, or PVC (vinyl) content)

HBF TEXTILES

Bleach Cleanable Fabrics

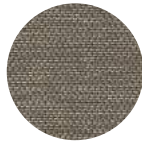
BEETLE



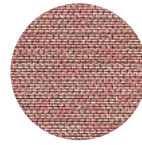
Rhino
945-18



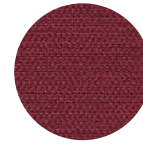
Tortoise
945-22



Bark
945-37



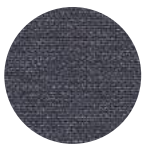
Lady Bug
945-40



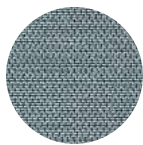
Stag
945-41



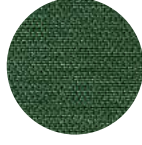
Clown
945-45



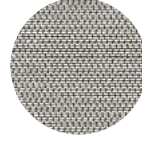
Longhorn
945-55



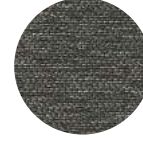
Jewel
945-58



Rhino
945-18



Rice
945-88



Patent
945-89

CADDY CORNER



Bias
1016-18



Diagonal
1016-25



Askew
1016-44



Crosswise
1016-55



Oblique
1016-56



Angle
1016-63



On A Slant
1016-67

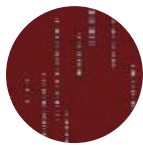


Opposite
1016-77

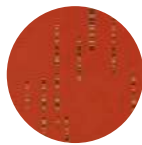
COLOR CODE



White
998-10



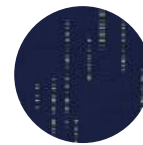
Red
998-44



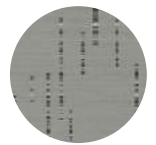
Orange
998-45



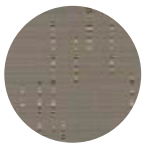
Blue Green
998-56



Blue
998-59



Light Grey
998-83

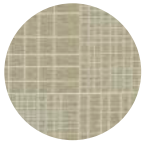


Warm Grey
998-84

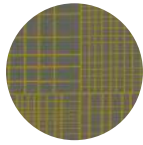
HBF TEXTILES

Bleach Cleanable Fabrics

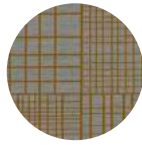
CURTAIN WALL



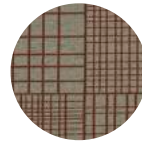
Zaha
1023-11



Michael
1023-22



Renzo
1023-25



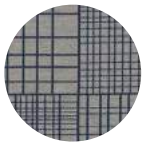
Frank
1023-36



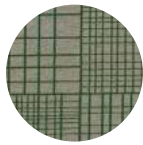
Robert
1023-44



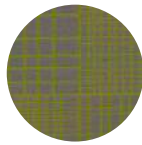
Denise
1023-45



Roark
1023-59



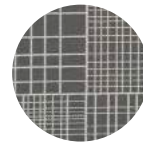
Richard
1023-62



Louis
1023-63



Phillip
1023-80



Ludwig
1023-85

CUTOUT



French Grey
946-18



Persian Rose
946-41



Ultramarine
946-57



Pearl Grey
946-83



Mars Black
946-90

DECO EPINGLE



Diamond
932-10



Gold
932-22



Copper
932-30



Sapphire
932-58

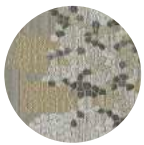


Platinum
932-84

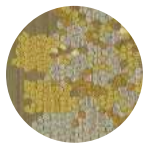


Sterling Silver
932-89

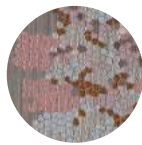
DIGITAL BLOOM



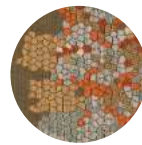
Paperwhite
996-11



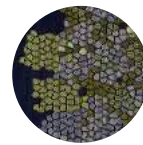
Yellow Button
996-22



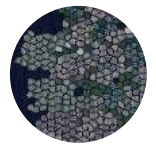
Peony
996-40



Autumn Joy
996-45



Forsythia
996-63



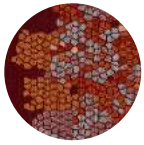
Soloman's Seal
996-67

Digital Bloom continued on next page

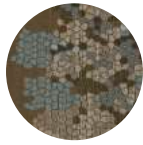
HBF TEXTILES

Bleach Cleanable Fabrics

DIGITAL BLOOM



Dahlia
996-75

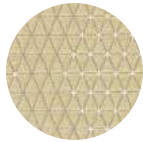


Hydrangea
996-83

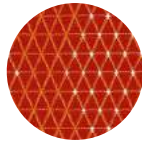
DOT STRUCTURE



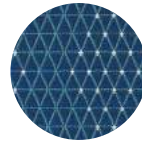
Cream White
931-18



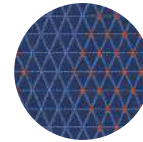
Camel White
931-20



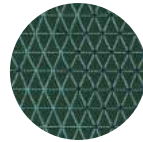
Red White
931-44



Aqua White
931-54



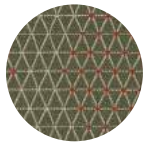
Blue Orange
931-55



Dark Green Navy
931-67



Purple Black
931-78



Grey Red
931-84

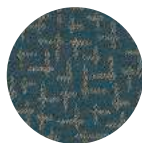
ENRICHED BOUCLE



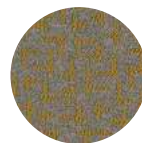
Macadamia
1021-11



Hazelnut
1021-31



Poppy Seed
1021-55



Turmeric
1021-63



Grey Salt
1021-89

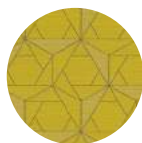
FOLDED LINES



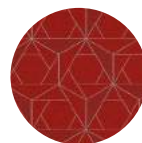
Chalk Black
973-10



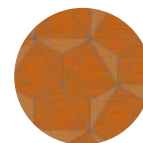
Taupe Brown
973-20



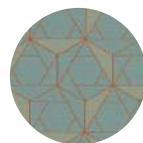
Yellow Taupe
973-22



Red White
973-44



Melon Blue
973-45



Sky Coral
973-51

Folded Lines continued on next page

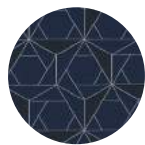
HBF TEXTILES

Bleach Cleanable Fabrics

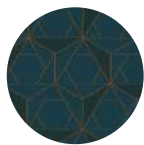
FOLDED LINES



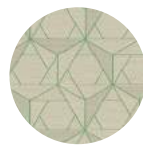
Grey Aqua
973-54



Navy White
973-57



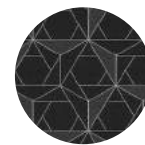
Indigo Orange
973-58



Beige Green
973-67

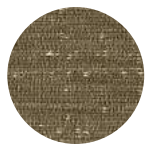


Charcoal Gold
973-87



Black White
973-90

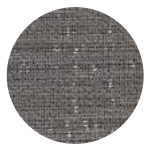
FOUNDATION



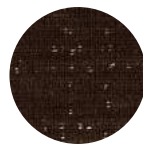
Sand
926-37



Gravel
926-84



Concrete
926-89



Ground
926-90

LINKAGE



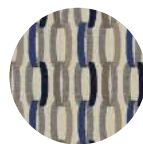
Alabaster
919-11



Lipstick
919-41



Lacquer Red
919-44



Indigo
919-54



Royal
919-55



Emerald
919-67

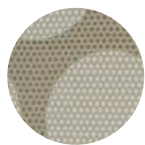


Mahogany
919-74

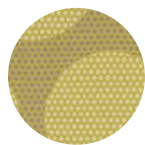


Dove
919-81

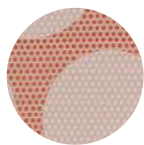
MADAM DOTTIE



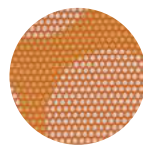
Sheepish
1001-20



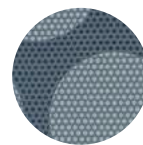
Peppy
1001-22



Modest
1001-40



Spicy
1001-46



Chill
1001-54



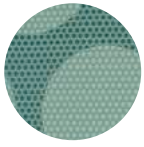
Deep
1001-55

Madam Dottie continued on next page

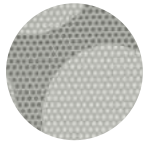
HBF TEXTILES

Bleach Cleanable Fabrics

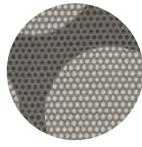
MADAM DOTTIE



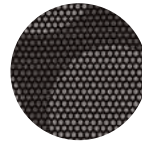
Tranquil
1001-67



Distinct
1001-80



Shady
1001-89



Determined
1001-90

MERCI BOUCLE



Meringue
955-10



Gris
955-18



Macaroon
955-20



Dijon
955-22



Cathedral
955-37



Fleur
955-40



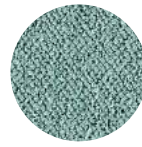
Poppy
955-43



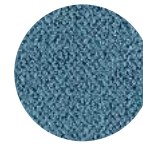
Rouge
955-44



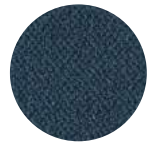
Sorbet
955-46



Wintergreen
955-56



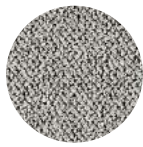
DuJour
955-58



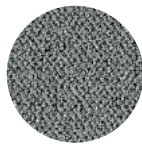
Indigo
955-59



Chartreuse
955-63



Sidewalk
955-83

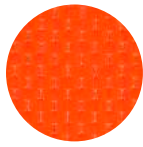


Ash
955-85

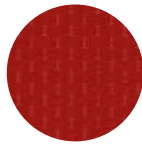
MR. DIMPLE



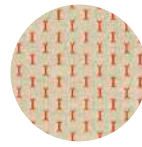
Peppy
1000-22



Loud
1000-43



Scandalous
1000-44



Spicy
1000-46



Deep
1000-55



Distint
1000-80



Shady
1000-89

HBF TEXTILES

Bleach Cleanable Fabrics

MS. QUILTY



Fickle
1002-30



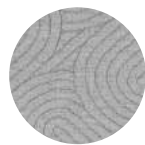
Scandalous
1002-44



Deep
1002-55



Tranquil
1002-67



Distinct
1002-80

OUTDOOR CHECK



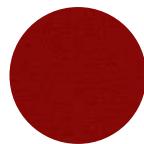
Blanc
981-10



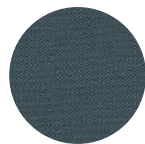
Citron
981-22



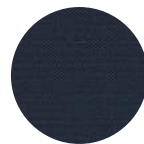
Marron
981-35



Rouge
981-44



Azur
981-54



Bleu Marine
981-58



Vert
981-67



Argent
981-83



Anthracite
981-89

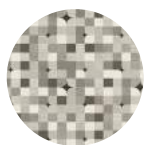
PAINTBOX



Warm Palette
990-18



Cool Palette
990-66

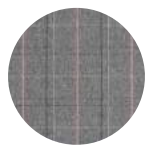


Neutral Palette
990-80

PICNIC PLAID



S'more
1029-11



Urban Park
1029-40



Campfire
1029-44



Lakeside
1029-55



Summertime
1029-56



Meadow
1029-66

Picnic Plaid continued on next page

HBF TEXTILES

Bleach Cleanable Fabrics

PICNIC PLAID



Pine
1029-67

QUILTED COMFORT



Honey
1020-25



Lychee
1020-40



Rosehip
1020-46



Juniper
1020-56



Blue Elderberry
1020-58



Turmeric
1020-63



Grey Salt
1020-89

ROY'S CORDS



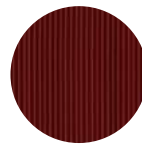
Off White
1025-11



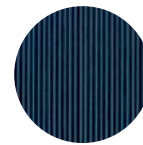
Gold
1025-25



Taupe
1025-37



Red
1025-44



Blue
1025-54



Green
1025-67



Grey
1025-89

SCRIBBLE XL



Grege
983-18



Azur
983-54



Bleu Turquoise
983-56



Noir
983-90

HBF TEXTILES

Bleach Cleanable Fabrics

SIR STRIPE-A-LOT



Sheepish
1004-20



Peppy
1004-22



Fickle
1004-30



Scandalous
1004-44



Spicy
1004-46



Chill
1004-54



Deep
1004-55



Tranquil
1004-67



Distinct
1004-80

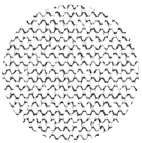


Shady
1004-89



Determined
1004-90

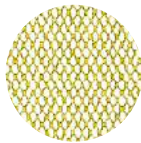
SISTER SOLID



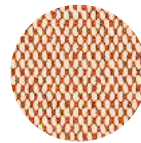
Pure
1003-11



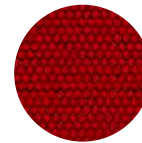
Sheepish
1003-20



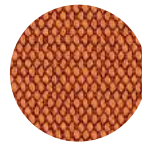
Peppy
1003-22



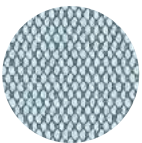
Modest
1003-40



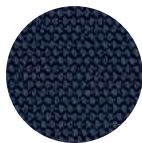
Scandalous
1003-44



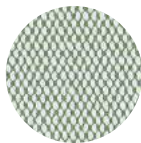
Spicy
1003-46



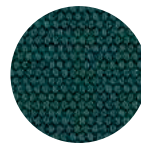
Chill
1003-54



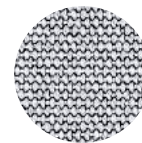
Deep
1003-55



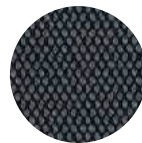
Lucid
1003-62



Tranquil
1003-67



Distinct
1003-80



Shady
1003-89

SMART



Pebble
971-18



Lemon
971-22



Coral
971-43



Bachelor's Button
971-55



Overcast
971-84



Smoke
971-98

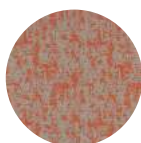
SOFT ANGLES



Copper
956-30



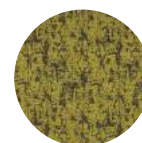
Alpine
956-37



Sorbet
956-46



Indigo
956-59



Chartreuse
956-63

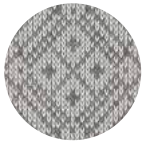


Violet
956-77

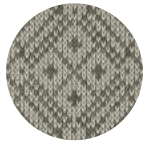
HBF TEXTILES

Bleach Cleanable Fabrics

SWEATER WEATHER



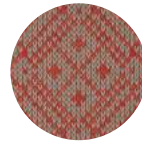
Aspen
1030-10



Birch
1030-18



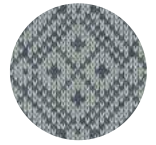
Cedar
1030-30



Redwood
1030-44



Willow
1030-55



Fir
1030-58



Pine
1030-67

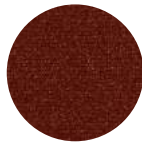
VELVET MIX



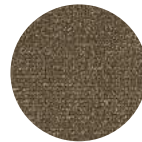
Tequila
977-25



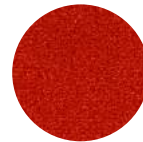
Sepia
977-30



Raw Sienna
977-36



Craft Paper
977-37



Cadmium Orange
977-43



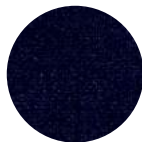
Salsa
977-44



Squash
977-45



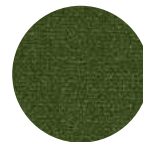
Watercolor
977-55



Ultramarine
977-57



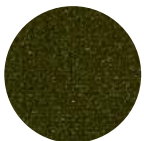
Cerulean
977-58



Grass
977-62



Acid
977-63



Martini
977-66



Phthalo Green
977-67



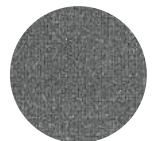
Deep Crimson
977-75



Paper Mache
977-80



Potion
977-84



Cement
977-85



Ink
977-89

HBFB TEXTILES

Bleach Cleanable Fabrics

WOODBLOCK



Ghost Image
920-18



Parchment
920-22



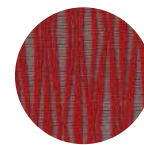
Antique Brass
920-25



Dusty Linen
920-37



Mahogany
920-39



Lacquer Red
920-44



Indigo
920-58



Fuschia
920-77



Warm Black
920-89

HBF TEXTILES

Fabric Cleaning & Disinfection
Against COVID-19 cont.

Polyurethanes

HBF Textiles offers a variety of polyurethanes for a high performance, [faux leather](#) aesthetic. As of 2020, the HBF Textiles portfolio is PVC free. We have outlined the disinfecting options for each HBF Textiles polyurethane below. Please remember that when using any of the EPA approved disinfectants below, it is important to follow the manufacturer's instructions.

All Terrain*	\$49.00/yard	1:5 Diluted bleach and water solution
Faux Real II	\$40.00/yard	1:10 Diluted bleach and water solution
Pebbled	\$45.00/yard	1:5 Diluted bleach and water solution Isopropyl alcohol (70% solution) Clorox Hydrogen Peroxide Disinfectant Diversey Virex II 256 (dilutable - 1:256 dilution) Ecolab Neutral Disinfectant Cleaner (dilutable - 1:128 dilution) Ecolab Oasis 146 (dilutable - 1:40 dilution) Ecolab Oasis Quat 144 (dilutable - 1:128 dilution) Purell Food Service Sanitizer PDI Sani-cloth HB PDI Sani-professional Multi Surface Wipes Triple S Perisept (dilutable - 1:32 dilution) Virox Accel Prevention Concentrate (dilutable - 1:40 dilution) Virox Accel TB
Sable Island*	\$67.00/yard	1:5 Diluted bleach and water solution Isopropyl alcohol (70% solution) Viraguard Virex TB Virox Accel TB ASepticare TB II Cavicide CaviWipes Clorox Disinfecting Wipes Discide Lysol Disinfecting Wipes PDI Sani Cloth Plus PDI Super Sani Cloth
Weekender*	\$36.00/yard	1:5 Diluted bleach and water solution

*Healthier Hospitals (HH) V2 Compliant:

(Material does not contain antimicrobials, per fluorinated compounds, flame retardants, or PVC (vinyl) content)

HBF TEXTILES

Bleach Cleanable Polyurethanes

ALL TERRAIN



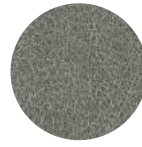
Alpine
1027-11



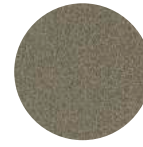
Mesa
1027-30



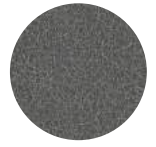
Marsh
1027-37



Altitude
1027-80



Tundra
1027-85

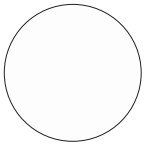


River
1027-85



Black Forest
1027-89

FAUX REAL II



Marshmallow
962-10



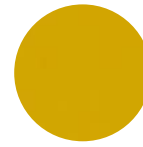
Greige
962-11



Parchment
962-16



Latte
962-18



Saffron
962-22



Rhino
962-37



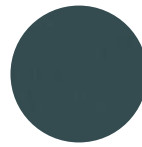
Java
962-38



Heirloom
962-43



Persimmon
962-45



Gulf
962-54



Deep Navy
962-59



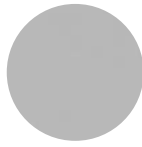
New Emerald
962-67



Jam
962-70



Seaglass
962-80



Stainless Steel
962-81



Submarine
962-83



Seal
962-84



India Ink
962-90

PEBBLED



Parcel
935-18



Parchment
935-20



Sunflower
935-22



Penny
935-30



Turkish Coffee
935-35



Zinnia
935-44

Pebbled continued on next page

HBF TEXTILES

Bleach Cleanable Polyurethanes

PEBBLED



Orange Peel
935-45



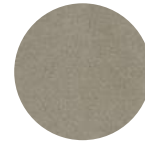
Lake
935-54



Poolside
935-56



Grasshopper
935-62



Seal
935-83



Stormy
935-89

SABLE ISLAND



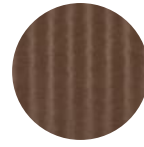
Sea Salt
937-11



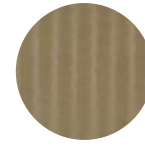
Driftwood
937-18



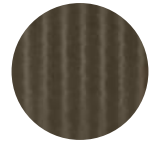
Mustang
937-25



Brindle
937-35



Foal
937-37



Colt
937-39



Overcast
937-80

WEEKENDER



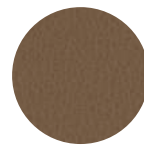
Marfa
994-11



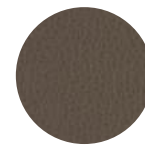
New Glarus
994-25



Austin
994-30



Joshua Tree
994-35



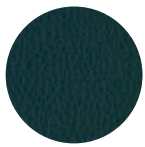
Hudson Valley
994-37



Sedona
994-39



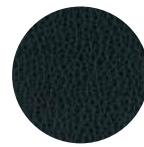
Nashville
994-44



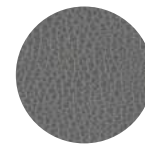
Hood River
994-56



Saugatuck
994-59



Asheville
994-67



Portland
994-84



Phoenixia
994-90

HBF TEXTILES

Fabric Cleaning & Disinfection
Against COVID-19 cont.

A note regarding Antimicrobials:

Antimicrobial finishes on fabrics are typically added to help protect the fabric itself from bacteria growth, mold growth, and in some outdoor fabrics, algae that can cause stains and odors. In these cases, antimicrobial chemicals are used to help protect the material from product deterioration.

To the best of our knowledge at this time, no suppliers or manufacturers of antimicrobial additives claim to be effective at killing viruses. There is still much research to be done on the chronic health impacts of long-term exposure to antimicrobial chemicals. With the current information available regarding antimicrobials, our experts here at HBF Textiles recommend following the [CDC guidelines](#) as the best practice in reducing the risk of exposure to the virus that causes COVID-19.